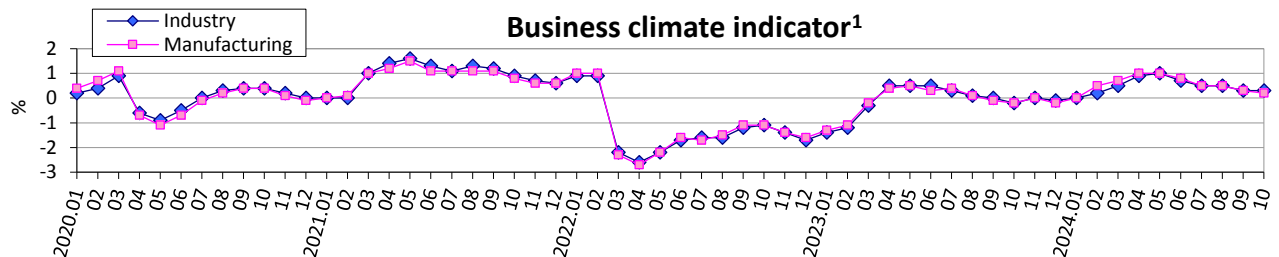
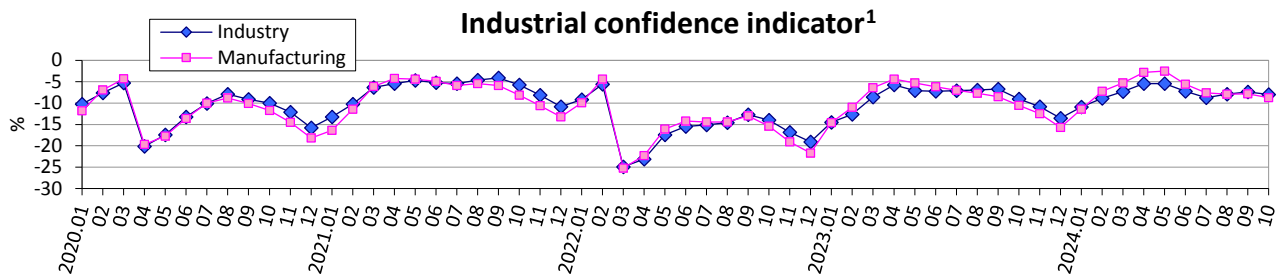
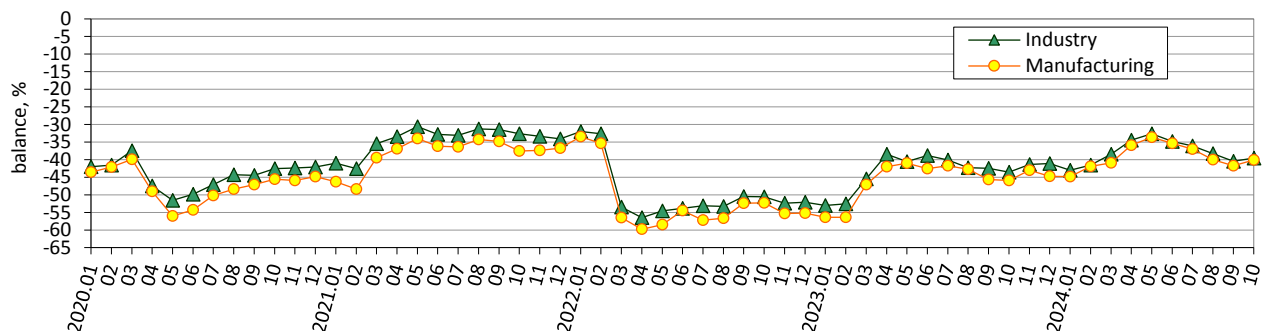


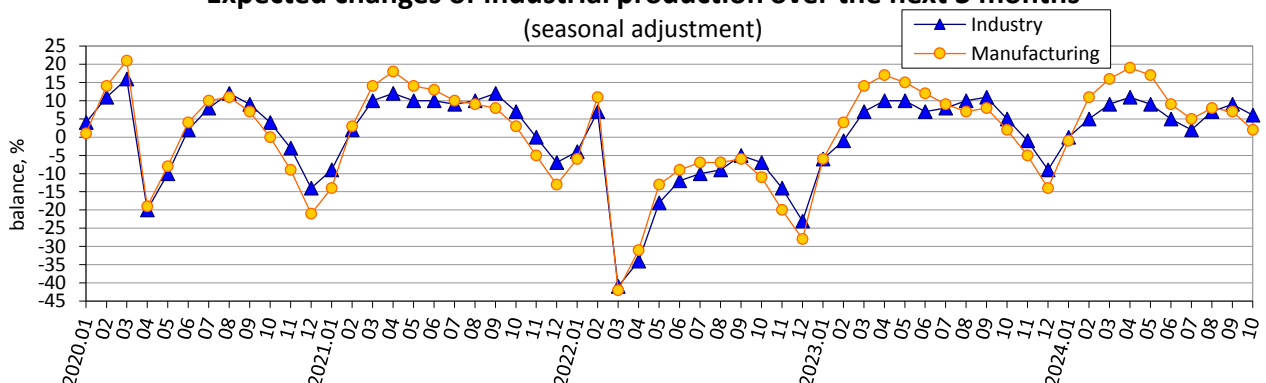
# Expectations of industrial enterprises in October 2024 regarding the development of their business activity



## Assessment of current order-books (demand) on the industrial production (seasonal adjustment)



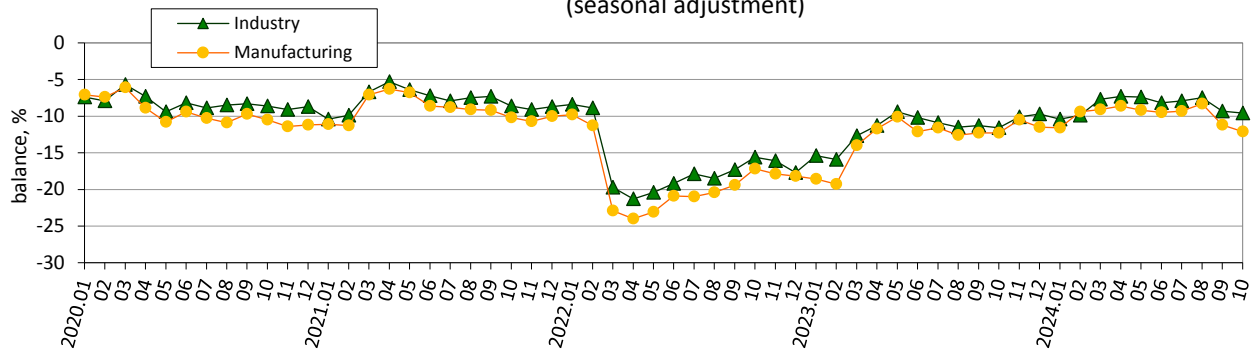
## Expected changes of industrial production over the next 3 months (seasonal adjustment)



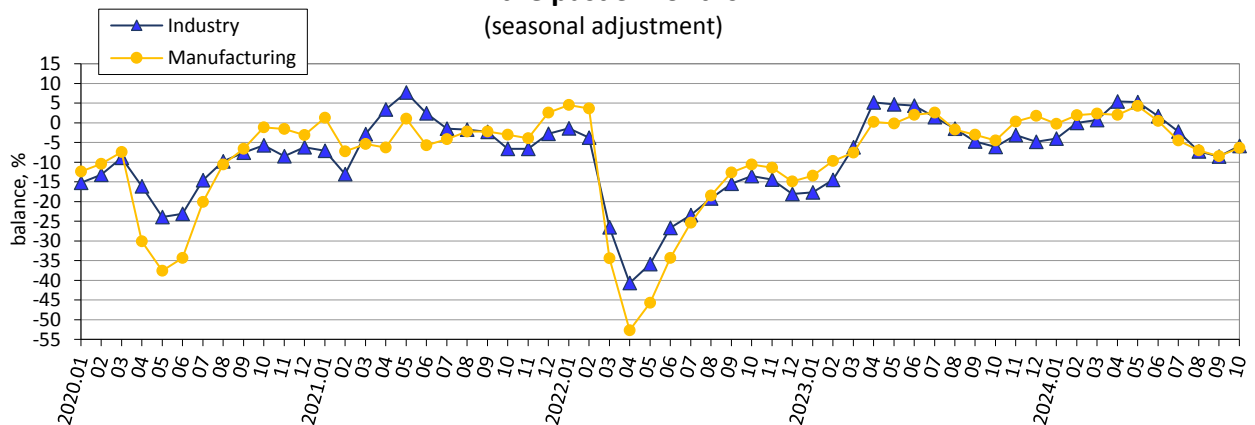
**Notes.** Data exclude the temporarily occupied territory of the Autonomous Republic of Crimea, the city of Sevastopol and a part of temporarily occupied territories in the Donetsk and Luhansk regions, data from March 2022 exclude the territories which are temporarily occupied by the Russian Federation and part of territories where the military actions are/were conducted.

<sup>1</sup> The indicator is calculated by the method of calculation of indicators of business expectations, approved by order of the SSSU of 03 December, 2021 No 301 (with changes).

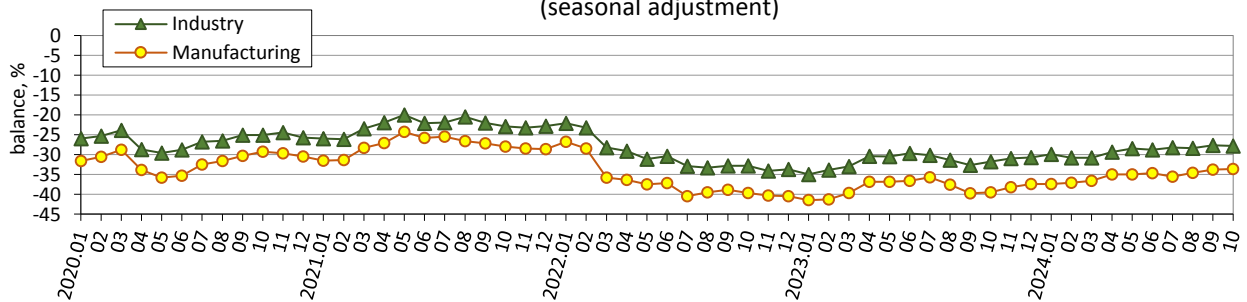
**Assessment of current stock of finished products  
in industry**  
(seasonal adjustment)



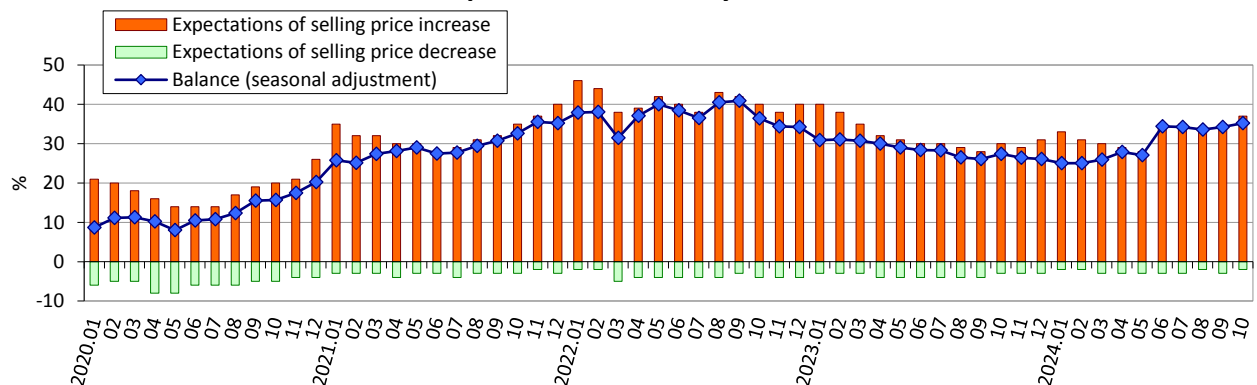
**Assessment of industrial production  
in the past 3 months**  
(seasonal adjustment)



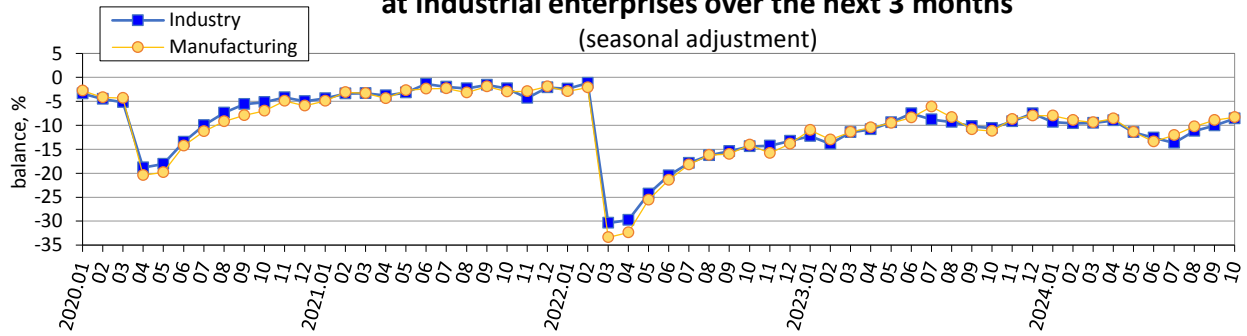
**Assessment of current export order-books (export demand)  
on the industrial production**  
(seasonal adjustment)



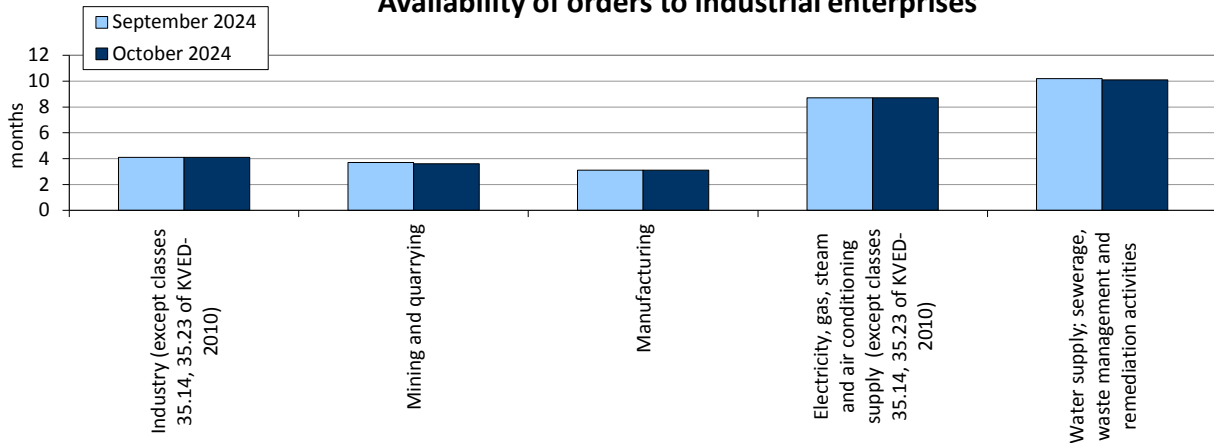
**Expected changes in selling prices  
for the products of industry over the next 3 months**



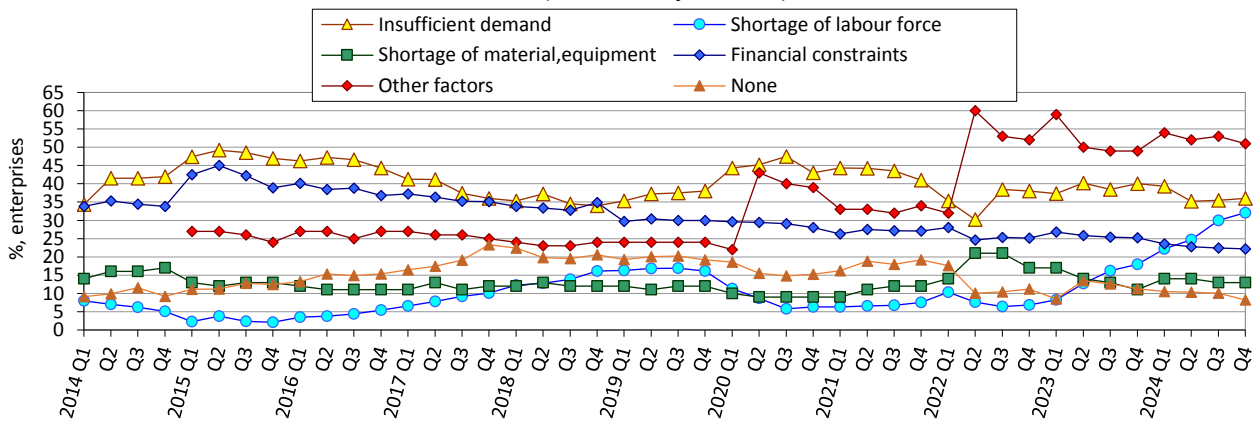
**Expected changes in employment  
at industrial enterprises over the next 3 months**  
(seasonal adjustment)



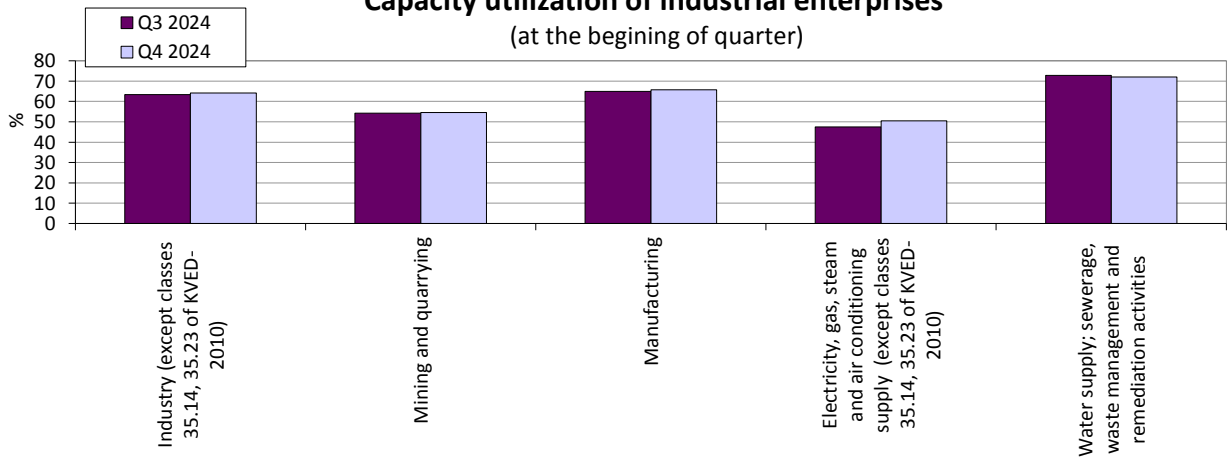
**Availability of orders to industrial enterprises**



**Factors limiting production**  
(seasonal adjustment)



**Capacity utilization of industrial enterprises**  
(at the beginning of quarter)



# Results of the survey of industry enterprises in October 2024

(per cent of the total number of surveyed enterprises)

|  |   |                         |  |            |  |                   |  |             |                                   |         |             |  |  |  |  |  |
|--|---|-------------------------|--|------------|--|-------------------|--|-------------|-----------------------------------|---------|-------------|--|--|--|--|--|
| Industry<br>(sections B-E<br>except classes<br>35.14, 35.23 of<br>KVED-2010)   | Results of the survey of 1103 enterprises   |                         |  |            |  |                   |  |             |                                   |         |             |  |  |  |  |  |
|  | How did change<br>in July-September 2024:   |                         | increased                                    |            | remain<br>unchanged                      |                   | decreased                                  |             | no response                       |         | balance     |  | change of<br>balance over<br>previous<br>month, pp |  |  |  |
|  | production  |                         | 22   |            | 55                                       |                   | 23   |             | 0                                 |         | -1          |  | 3  |  |  |  |
|  | total order-books (demand)  |                         | 20   |            | 59                                       |                   | 21   |             | 0                                 |         | -1          |  | 4  |  |  |  |
|  |   |                         |  |            |  |                   |  |             |                                   |         |             |  |  |  |  |  |
|  | How do you assess your<br>current overall order-books<br>(demand)                             |                         | more than<br>sufficient<br>(above<br>normal) |            | sufficient<br>(normal for<br>the season) |                   | not<br>sufficient<br>(below<br>normal)     |             | no response                       |         | balance     |  | change of<br>balance over<br>previous<br>month, pp |  |  |  |
|  |   |                         | 2  |            | 58                                       |                   | 40   |             | 0                                 |         | -38         |  | 2  |  |  |  |
|  |   |                         |  |            |  |                   |  |             |                                   |         |             |  |  |  |  |  |
|  | How do you assess your<br>current export order-books<br>(export demand)                       |                         | more than<br>sufficient<br>(above<br>normal) |            | sufficient<br>(normal for<br>the season) |                   | not<br>sufficient<br>(below<br>normal)     |             | no export                         |         | balance     |  | change of<br>balance over<br>previous<br>month, pp |  |  |  |
|  |   |                         | 0  |            | 28                                       |                   | 28   |             | 44                                |         | -28         |  | 0  |  |  |  |
|  |   |                         |  |            |  |                   |  |             |                                   |         |             |  |  |  |  |  |
|  | How do you assess your<br>current stocks of finished<br>products                              |                         | too large<br>(above<br>normal)               |            | adequate<br>(normal for<br>the season)   |                   | too small<br>(below<br>normal)             |             | no stocks of<br>finished<br>goods |         | balance     |  | change of<br>balance over<br>previous<br>month, pp |  |  |  |
|  |   |                         | 3  |            | 59                                       |                   | 12   |             | 26                                |         | -9          |  | 0  |  |  |  |
|  |   |                         |  |            |  |                   |  |             |                                   |         |             |  |  |  |  |  |
|  | The future development of<br>your business situation is<br>currently                          |                         | easy<br>to<br>predict                        |            | modera-<br>tely<br>easy<br>to predict    |                   | modera-<br>tely<br>difficult<br>to predict |             | difficult<br>to<br>predict        |         | no response |  | balance  |  | change of<br>balance over<br>previous<br>month, pp |  |
|  |   |                         | 1  |            | 4  |                   | 53   |             | 42                                |         | 0           |  | 66   |  | -1   |  |
|  |   |                         |  |            |  |                   |  |             |                                   |         |             |  |  |  |  |  |
|  | How do you expect to change<br>over October-December 2024:                                    |                         | increase                                     |            | remain<br>unchanged                      |                   | decrease                                   |             | no response                       |         | balance     |  | change of<br>balance over<br>previous<br>month, pp |  |  |  |
|  | production  |                         | 27   |            | 52                                       |                   | 21   |             | 0                                 |         | 6           |  | -3   |  |  |  |
|  | selling prices for the products   |                         | 37   |            | 61                                       |                   | 2  |             | 0                                 |         | 35          |  | 3  |  |  |  |
|  | employment  |                         | 10   |            | 72                                       |                   | 18   |             | 0                                 |         | -8          |  | 0  |  |  |  |
|  |   |                         |  |            |  |                   |  |             |                                   |         |             |  |  |  |  |  |
|  | How do you expect<br>to change export orders<br>(export demand) over<br>October-December 2024 |                         | increase                                     |            | remain<br>unchanged                      |                   | decrease                                   |             | no export                         |         | balance     |  | change of<br>balance over<br>previous<br>month, pp |  |  |  |
| 8  |   |                         | 39   |            | 10                                       |                   | 43   |             | -2                                |         | 0           |  |  |  |  |  |
|  |   |                         |  |            |  |                   |  |             |                                   |         |             |  |  |  |  |  |
| How do you assess your<br>current production capacity,<br>considering your current<br>order books and the expected<br>change in demand over<br>October-December 2024 |   | more than<br>sufficient |  | sufficient |  | not<br>sufficient |  | no response |                                   | balance |             | change of<br>balance over<br>previous<br>quarter, pp |  |  |  |  |
|  |   | 12                      |  | 72         |  | 15                |  | 1           |                                   | -3      |             | -1   |  |  |  |  |

|  |  |                |                       |                   |             |         |  |   |
|--|--|----------------|-----------------------|-------------------|-------------|---------|--|---|
| Industry<br>(sections B-E<br>except classes<br>35.14, 35.23 of<br>KVED-2010) | How did change<br>competitive position<br>on the domestic market<br>in July-September 2024 | improved       | remained<br>unchanged | deterio-<br>rated | no response | balance | change of<br>balance over<br>previous<br>quarter, pp |   |
|  |  | 4              | 86                    | 9                 | 1           | -5      | 0  |   |
|  |  |                |                       |                   |             |         |  |   |
|  | How did change<br>competitive position<br>on foreign markets<br>in July-September 2024:    | improved       | remained<br>unchanged | deterio-<br>rated | no export   | balance | change of<br>balance over<br>previous<br>quarter, pp |   |
|  |  | inside the EU  | 3                     | 46                | 6           | 45      | -3   | 2 |
|  |  | outside the EU | 2                     | 45                | 5           | 48      | -3   | 2 |
|  |  |                |                       |                   |             |         |  |   |

|  |   |                                     |                  |                                    |          |                                 |           |                             |         |             |   |   |  |   |
|--|---|-------------------------------------|------------------|------------------------------------|----------|---------------------------------|-----------|-----------------------------|---------|-------------|---|---|--|---|
| Mining and quarrying<br>(section B of KVED-2010)                                     | Results of the survey of 57 enterprises                           |                                     |                  |                                    |          |                                 |           |                             |         |             |   |   |  |   |
|  | How did change in July-September 2024:                            | increased                           |                  | remain unchanged                   |          | decreased                       |           | no response                 |         | balance     |   | change of balance over previous month, pp |  |   |
|  |   | production                          |                  | 26                                 |          | 48                              |           | 26                          |         | 0           |   | 0   |  | -7  |
|  |   | total order-books (demand)          |                  | 19                                 |          | 56                              |           | 25                          |         | 0           |   | -6  |  | -1  |
|  |   |                                     |                  |                                    |          |                                 |           |                             |         |             |   |   |  |   |
|  | How do you assess your current overall order-books (demand)       | more than sufficient (above normal) |                  | sufficient (normal for the season) |          | not sufficient (below normal)   |           | no response                 |         | balance     |   | change of balance over previous month, pp |  |   |
|  |   | 0                                   |                  | 47                                 |          | 53                              |           | 0                           |         | -53         |   | -4  |  |   |
|  |   |                                     |                  |                                    |          |                                 |           |                             |         |             |   |   |  |   |
|  | How do you assess your current export order-books (export demand) | more than sufficient (above normal) |                  | sufficient (normal for the season) |          | not sufficient (below normal)   |           | no export                   |         | balance     |   | change of balance over previous month, pp |  |   |
|  |   | 0                                   |                  | 11                                 |          | 17                              |           | 72                          |         | -17         |   | 2   |  |   |
|  |   |                                     |                  |                                    |          |                                 |           |                             |         |             |   |   |  |   |
|  | How do you assess your current stocks of finished products        | too large (above normal)            |                  | adequate (normal for the season)   |          | too small (below normal)        |           | no stocks of finished goods |         | balance     |   | change of balance over previous month, pp |  |   |
|  |   | 7                                   |                  | 61                                 |          | 18                              |           | 14                          |         | -11         |   | -4  |  |   |
|  |   |                                     |                  |                                    |          |                                 |           |                             |         |             |   |   |  |   |
|  | The future development of your business situation is currently    | easy to predict                     |                  | moderately easy to predict         |          | moderately difficult to predict |           | difficult to predict        |         | no response |   | balance                                   |  | change of balance over previous month, pp |
|  |   | 2                                   |                  | 0                                  |          | 45                              |           | 53                          |         | 0           |   | 74  |  | -2  |
|  |   |                                     |                  |                                    |          |                                 |           |                             |         |             |   |   |  |   |
|  | How do you expect to change over October-December 2024:           | increase                            |                  | remain unchanged                   |          | decrease                        |           | no response                 |         | balance     |   | change of balance over previous month, pp |  |   |
|  |   | production                          |                  | 19                                 |          | 53                              |           | 28                          |         | 0           |   | -9  |  | -9  |
|  |   | selling prices for the products     |                  | 25                                 |          | 68                              |           | 7                           |         | 0           |   | 18  |  | 10  |
| employment   | 2   |                                     | 70               |                                    | 28       |                                 | 0         |                             | -26     |             | 0   |   |  |   |
|  |   |                                     |                  |                                    |          |                                 |           |                             |         |             |   |   |  |   |
| How do you expect to change export orders (export demand) over October-December 2024 | increase  |                                     | remain unchanged |                                    | decrease |                                 | no export |                             | balance |             | change of balance over previous month, pp |   |  |   |
|  | 2   |                                     | 25               |                                    | 5        |                                 | 68        |                             | -3      |             | 6   |   |  |   |

Continued

|  |   |                      |                    |                |             |         |   |
|--|---|----------------------|--------------------|----------------|-------------|---------|---|
| Mining and quarrying<br>(section B of KVED-2010) | How do you assess your current production capacity, considering your current order books and the expected change in demand over October-December 2024 | more than sufficient | sufficient         | not sufficient | no response | balance | change of balance over previous quarter, pp |
|  |   | 16                   | 61                 | 23             | 0           | -7      | -2  |
|  |   |                      |                    |                |             |         |   |
|  | How did change competitive position on the domestic market in July-September 2024   | improved             | remained unchanged | deterio-rated  | no response | balance | change of balance over previous quarter, pp |
|  |   | 5                    | 83                 | 12             | 0           | -7      | 5   |
|  |   |                      |                    |                |             |         |   |
|  | How did change competitive position on foreign markets in July-September 2024:  | improved             | remained unchanged | deterio-rated  | no export   | balance | change of balance over previous quarter, pp |
|  |   | inside the EU        | 0                  | 19             | 9           | 72      | -9  |
|  | outside the EU  | 0                    | 16                 | 7              | 77          | -7      | -5  |

|  |   |  |  |  |                                   |             |  |  |
|--|---|--|--|--|-----------------------------------|-------------|--|--|
| Manufacturing<br>(section C of<br>KVED-2010) | Results of the survey of 876 enterprises                                |  |  |  |                                   |             |  |  |
|  | How did change<br>in July-September 2024:                               | increased                                    | remain<br>unchanged                      | decreased                                  | no response                       | balance     | change of<br>balance over<br>previous<br>month, pp |  |
|  | production  | 23   | 54                                       | 23   | 0                                 | 0           | 3  |  |
|  | total order-books (demand)  | 21   | 58                                       | 21   | 0                                 | 0           | 2  |  |
|  |   |  |  |  |                                   |             |  |  |
|  | How do you assess your<br>current overall order-books<br>(demand)       | more than<br>sufficient<br>(above<br>normal) | sufficient<br>(normal for<br>the season) | not<br>sufficient<br>(below<br>normal)     | no response                       | balance     | change of<br>balance over<br>previous<br>month, pp |  |
|  |   | 2  | 56                                       | 42   | 0                                 | -40         | 1  |  |
|  |   |  |  |  |                                   |             |  |  |
|  | How do you assess your<br>current export order-books<br>(export demand) | more than<br>sufficient<br>(above<br>normal) | sufficient<br>(normal for<br>the season) | not<br>sufficient<br>(below<br>normal)     | no export                         | balance     | change of<br>balance over<br>previous<br>month, pp |  |
|  |   | 0  | 34                                       | 34   | 32                                | -34         | 0  |  |
|  |   |  |  |  |                                   |             |  |  |
|  | How do you assess your<br>current stocks of finished<br>products        | too large<br>(above<br>normal)               | adequate<br>(normal for<br>the season)   | too small<br>(below<br>normal)             | no stocks of<br>finished<br>goods | balance     | change of<br>balance over<br>previous<br>month, pp |  |
|  |   | 3  | 67                                       | 14   | 16                                | -11         | 0  |  |
|  |   |  |  |  |                                   |             |  |  |
|  | The future development of<br>your business situation is<br>currently    | easy<br>to<br>predict                        | modera-<br>tely<br>easy<br>to predict    | modera-<br>tely<br>difficult<br>to predict | difficult<br>to<br>predict        | no response | balance  | change of<br>balance over<br>previous<br>month, pp |
|  |   | 1  | 4  | 54   | 41                                | 0           | 65   | 0  |
|  |   |  |  |  |                                   |             |  |  |
|  | How do you expect to change<br>over October-December 2024:              | increase                                     | remain<br>unchanged                      | decrease                                   | no response                       | balance     | change of<br>balance over<br>previous<br>month, pp |  |
|  | production  | 24   | 54                                       | 22   | 0                                 | 2           | -5   |  |
|  | selling prices for the products   | 40   | 58                                       | 2  | 0                                 | 38          | 1  |  |
|  | employment  | 9  | 72                                       | 19   | 0                                 | -10         | -2   |  |

Continued

|  |  |                         |                       |                   |             |         |  |
|--|--|-------------------------|-----------------------|-------------------|-------------|---------|--|
| Manufacturing<br>(section C of<br>KVED-2010) | How do you expect<br>to change export orders<br>(export demand) over<br>October-December 2024  | increase                | remain<br>unchanged   | decrease          | no export   | balance | change of<br>balance over<br>previous<br>month, pp   |
|  |  | 10                      | 47                    | 12                | 31          | -2      | 0  |
|  |  |                         |                       |                   |             |         |  |
|  | How do you assess your<br>current production capacity,<br>considering your current<br>order books and the expected<br>change in demand over<br>October-December 2024 | more than<br>sufficient | sufficient            | not<br>sufficient | no response | balance | change of<br>balance over<br>previous<br>quarter, pp |
|  |  | 12                      | 73                    | 14                | 1           | -2      | -2   |
|  |  |                         |                       |                   |             |         |  |
|  | How did change<br>competitive position<br>on the domestic market<br>in July-September 2024   | improved                | remained<br>unchanged | deterio-<br>rated | no response | balance | change of<br>balance over<br>previous<br>quarter, pp |
|  |  | 5                       | 85                    | 9                 | 1           | -4      | 2  |
|  |  |                         |                       |                   |             |         |  |
|  | How did change<br>competitive position<br>on foreign markets<br>in July-September 2024:  | improved                | remained<br>unchanged | deterio-<br>rated | no export   | balance | change of<br>balance over<br>previous<br>quarter, pp |
|  |  | inside the EU           | 3                     | 56                | 7           | 34      | -4   |
|  | outside the EU   | 2                       | 55                    | 6                 | 37          | -4      | 3  |

|   |   |                                     |  |                                    |  |                                 |  |                             |  |             |  |   |  |   |  |
|---|---|-------------------------------------|--|------------------------------------|--|---------------------------------|--|-----------------------------|--|-------------|--|---|--|---|--|
| Electricity, gas, steam and air conditioning supply (section D, except classes 35.14, 35.23 of KVED-2010) | Results of the survey of 101 enterprises                          |                                     |  |                                    |  |                                 |  |                             |  |             |  |   |  |   |  |
|   | How did change in July-September 2024:                            | increased                           |  | remain unchanged                   |  | decreased                       |  | no response                 |  | balance     |  | change of balance over previous month, pp |  |   |  |
|   |   | production                          |  | 18                                 |  | 54                              |  | 28                          |  | 0           |  | -10                                       |  | 24  |  |
|   |   | total order-books (demand)          |  | 15                                 |  | 60                              |  | 25                          |  | 0           |  | -10                                       |  | 18  |  |
|   |   |                                     |  |                                    |  |                                 |  |                             |  |             |  |   |  |   |  |
|   | How do you assess your current overall order-books (demand)       | more than sufficient (above normal) |  | sufficient (normal for the season) |  | not sufficient (below normal)   |  | no response                 |  | balance     |  | change of balance over previous month, pp |  |   |  |
|   |   | 1                                   |  | 69                                 |  | 30                              |  | 0                           |  | -29         |  | 0   |  |   |  |
|   |   |                                     |  |                                    |  |                                 |  |                             |  |             |  |   |  |   |  |
|   | How do you assess your current export order-books (export demand) | more than sufficient (above normal) |  | sufficient (normal for the season) |  | not sufficient (below normal)   |  | no export                   |  | balance     |  | change of balance over previous month, pp |  |   |  |
|   |   | 0                                   |  | 2                                  |  | 0                               |  | 98                          |  | 0           |  | 0   |  |   |  |
|   |   |                                     |  |                                    |  |                                 |  |                             |  |             |  |   |  |   |  |
|   | How do you assess your current stocks of finished products        | too large (above normal)            |  | adequate (normal for the season)   |  | too small (below normal)        |  | no stocks of finished goods |  | balance     |  | change of balance over previous month, pp |  |   |  |
|   |   | 0                                   |  | 7                                  |  | 4                               |  | 89                          |  | -4          |  | -1  |  |   |  |
|   |   |                                     |  |                                    |  |                                 |  |                             |  |             |  |   |  |   |  |
|   | The future development of your business situation is currently    | easy to predict                     |  | moderately easy to predict         |  | moderately difficult to predict |  | difficult to predict        |  | no response |  | balance                                   |  | change of balance over previous month, pp |  |
|   |   | 2                                   |  | 5                                  |  | 46                              |  | 47                          |  | 0           |  | 66  |  | 1   |  |

Continued

|  |  |                      |                    |                |             |         |  |
|--|--|----------------------|--------------------|----------------|-------------|---------|--|
| <i>Electricity, gas, steam and air conditioning supply (section D, except classes 35.14, 35.23 of KVED-2010)</i> | <b>How do you expect to change over October-December 2024:</b>   | increase             | remain unchanged   | decrease       | no response | balance | <i>change of balance over previous month, pp</i>   |
|  | production   | 67                   | 23                 | 10             | 0           | 57      | 20   |
|  | selling prices for the products  | 28                   | 69                 | 2              | 1           | 26      | 6  |
|  | employment   | 35                   | 54                 | 11             | 0           | 24      | 9  |
|  | <b>How do you expect to change export orders (export demand) over October-December 2024</b>  | increase             | remain unchanged   | decrease       | no export   | balance | <i>change of balance over previous month, pp</i>   |
|  |  | 0                    | 2                  | 0              | 98          | 0       | 0  |
|  | <b>How do you assess your current production capacity, considering your current order books and the expected change in demand over October-December 2024</b> | more than sufficient | sufficient         | not sufficient | no response | balance | <i>change of balance over previous quarter, pp</i> |
|  |  | 9                    | 72                 | 19             | 0           | -10     | 1  |
|  | <b>How did change competitive position on the domestic market in July-September 2024</b>   | improved             | remained unchanged | deteriorated   | no response | balance | <i>change of balance over previous quarter, pp</i> |
|  |  | 1                    | 90                 | 9              | 0           | -8      | -1   |
|  | <b>How did change competitive position on foreign markets in July-September 2024:</b>  | improved             | remained unchanged | deteriorated   | no export   | balance | <i>change of balance over previous quarter, pp</i> |
|  | inside the EU  | 0                    | 2                  | 0              | 98          | 0       | 0  |
|  | outside the EU   | 0                    | 2                  | 0              | 98          | 0       | 0  |

|   |  |                                     |                                    |                               |             |         |  |
|---|--|-------------------------------------|------------------------------------|-------------------------------|-------------|---------|--|
| <i>Water supply, sewerage, waste management and remediation activities (section E of KVED-2010)</i> | <i>Results of the survey of 69 enterprises</i>                           |                                     |                                    |                               |             |         |  |
|   | <b>How did change in July-September 2024:</b>                            | increased                           | remain unchanged                   | decreased                     | no response | balance | <i>change of balance over previous month, pp</i> |
|   | production   | 17                                  | 70                                 | 13                            | 0           | 4       | 0  |
|   | total order-books (demand)   | 14                                  | 73                                 | 13                            | 0           | 1       | 1  |
|   | <b>How do you assess your current overall order-books (demand)</b>       | more than sufficient (above normal) | sufficient (normal for the season) | not sufficient (below normal) | no response | balance | <i>change of balance over previous month, pp</i> |
|   |  | 0                                   | 74                                 | 26                            | 0           | -26     | 3  |
|   | <b>How do you assess your current export order-books (export demand)</b> | more than sufficient (above normal) | sufficient (normal for the season) | not sufficient (below normal) | no export   | balance | <i>change of balance over previous month, pp</i> |
|   |  | 0                                   | 0                                  | 1                             | 99          | -1      | 0  |



|  |   |                          |                            |                                  |                      |                          |  |                             |  |   |  |   |
|--|---|--------------------------|----------------------------|----------------------------------|----------------------|--------------------------|--|-----------------------------|--|---|--|---|
| Water supply, sewerage, waste management and remediation activities (section E of KVED-2010) | How do you assess your current stocks of finished products  | too large (above normal) |                            | adequate (normal for the season) |                      | too small (below normal) |  | no stocks of finished goods |  | balance                                   |  | change of balance over previous month, pp   |
|  |   | 0                        |                            | 33                               |                      | 0                        |  | 67                          |  | 0   |  | 0   |
|  |   |                          |                            |                                  |                      |                          |  |                             |  |   |  |   |
|  | The future development of your business situation is currently  | easy to predict          | moderately easy to predict | moderately difficult to predict  | difficult to predict | no response              |  | balance                     |  | change of balance over previous month, pp |  |   |
|  |   | 3                        | 1                          | 47                               | 49                   | 0                        |  | 69                          |  | -2  |  |   |
|  |   |                          |                            |                                  |                      |                          |  |                             |  |   |  |   |
|  | How do you expect to change over October-December 2024:   | increase                 |                            | remain unchanged                 |                      | decrease                 |  | no response                 |  | balance                                   |  | change of balance over previous month, pp   |
|  | production  | 13                       |                            | 59                               |                      | 28                       |  | 0                           |  | -15                                       |  | -7  |
|  | selling prices for the products   | 17                       |                            | 83                               |                      | 0                        |  | 0                           |  | 17  |  | -2  |
|  | employment  | 4                        |                            | 80                               |                      | 16                       |  | 0                           |  | -12                                       |  | -1  |
|  |   |                          |                            |                                  |                      |                          |  |                             |  |   |  |   |
|  | How do you expect to change export orders (export demand) over October-December 2024  | increase                 |                            | remain unchanged                 |                      | decrease                 |  | no export                   |  | balance                                   |  | change of balance over previous month, pp   |
|  |   | 0                        |                            | 1                                |                      | 0                        |  | 99                          |  | 0   |  | 0   |
|  |   |                          |                            |                                  |                      |                          |  |                             |  |   |  |   |
|  | How do you assess your current production capacity, considering your current order books and the expected change in demand over October-December 2024 | more than sufficient     |                            | sufficient                       |                      | not sufficient           |  | no response                 |  | balance                                   |  | change of balance over previous quarter, pp |
|  |   | 6                        |                            | 83                               |                      | 11                       |  | 0                           |  | -5  |  | 1   |
|  |   |                          |                            |                                  |                      |                          |  |                             |  |   |  |   |
|  | How did change competitive position on the domestic market in July-September 2024   | improved                 |                            | remained unchanged               |                      | deteriorated             |  | no response                 |  | balance                                   |  | change of balance over previous quarter, pp |
|  |   | 2                        |                            | 94                               |                      | 4                        |  | 0                           |  | -2  |  | -1  |
|  |   |                          |                            |                                  |                      |                          |  |                             |  |   |  |   |
|  | How did change competitive position on foreign markets in July-September 2024:  | improved                 |                            | remained unchanged               |                      | deteriorated             |  | no export                   |  | balance                                   |  | change of balance over previous quarter, pp |
|  | inside the EU   | 0                        |                            | 1                                |                      | 0                        |  | 99                          |  | 0   |  | 0   |
|  | outside the EU  | 0                        |                            | 0                                |                      | 0                        |  | 100                         |  | 0   |  | 0   |