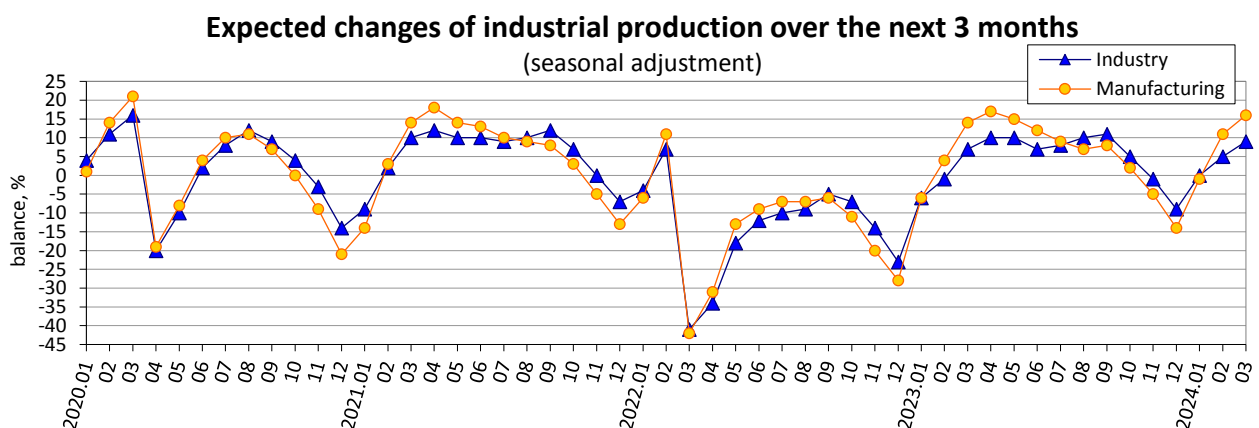
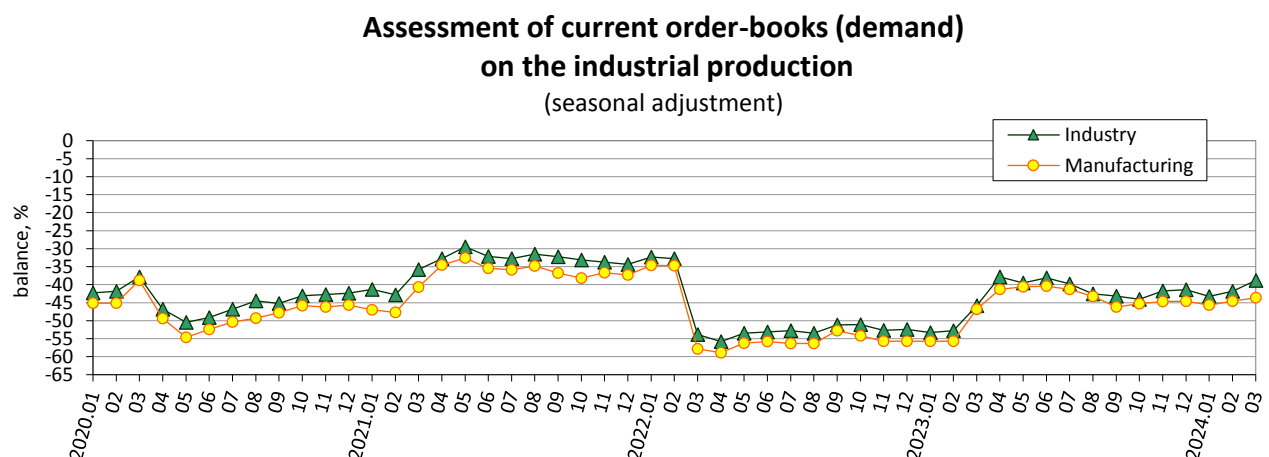
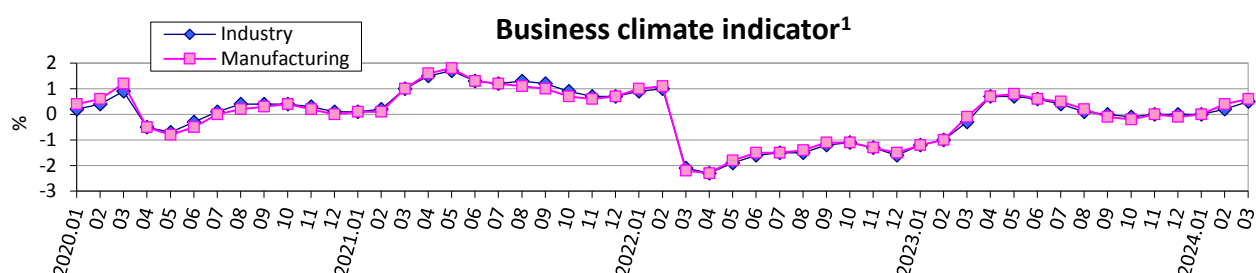
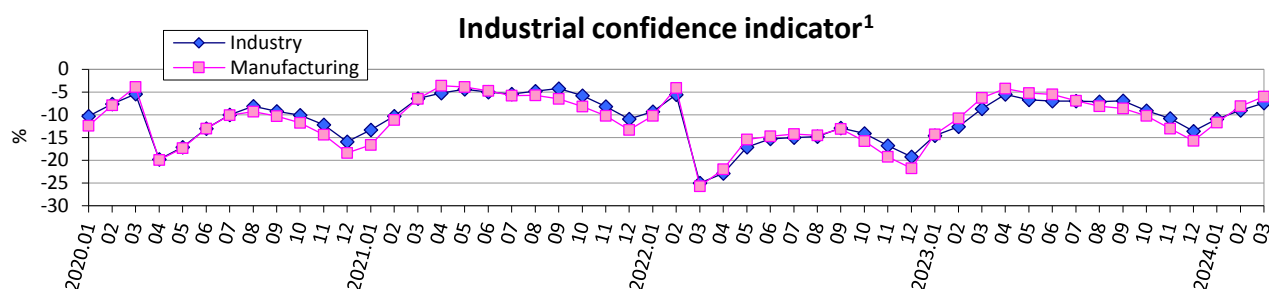


# **Expectations of industrial enterprises in March 2024 regarding the development of their business activity**

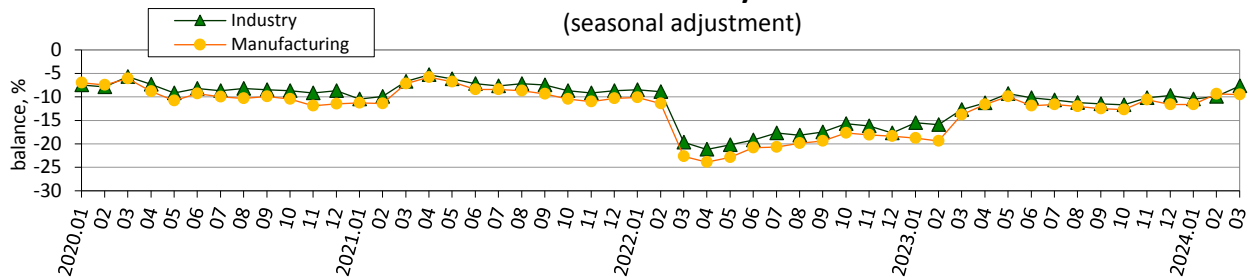


**Notes.** Data exclude the temporarily occupied territory of the Autonomous Republic of Crimea, the city of Sevastopol and a part of temporarily occupied territories in the Donetsk and Luhansk regions, data from March 2022 exclude the territories which are temporarily occupied by the Russian Federation and part of territories where the military actions are/were conducted.

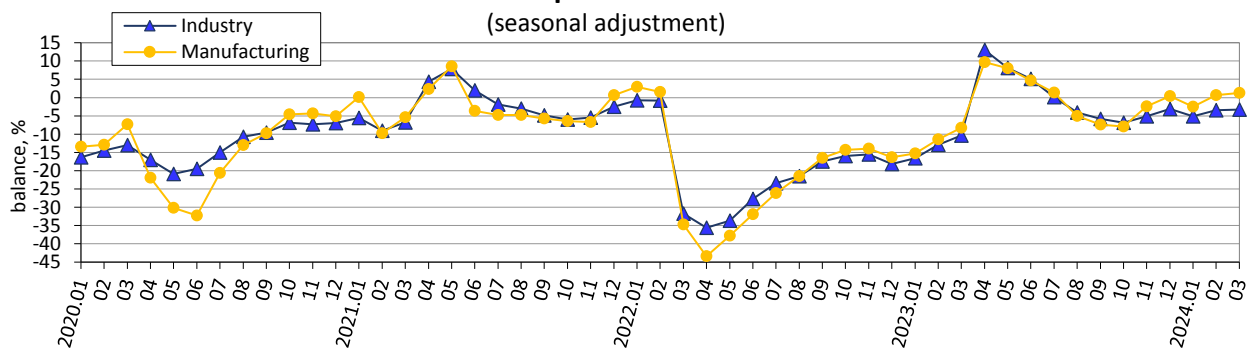
Information from March 2022 to March 2024 has been compiled on the basis of reports actually submitted by enterprises.

<sup>1</sup> The indicator is calculated by the method of calculation of indicators of business expectations, approved by order of the SSSU of 03 December, 2021 No 301 (with changes).

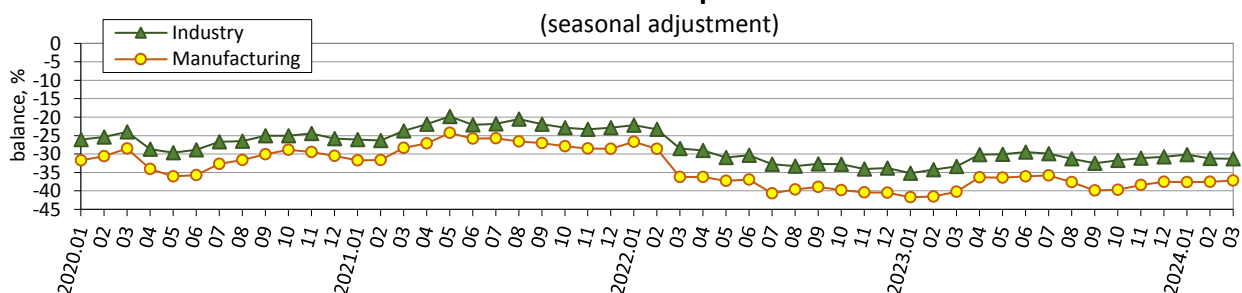
### Assessment of current stock of finished products in industry



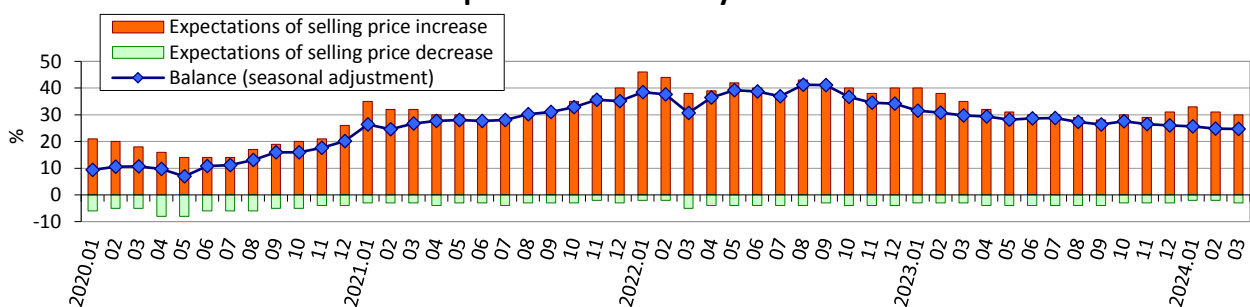
### Assessment of industrial production in the past 3 months



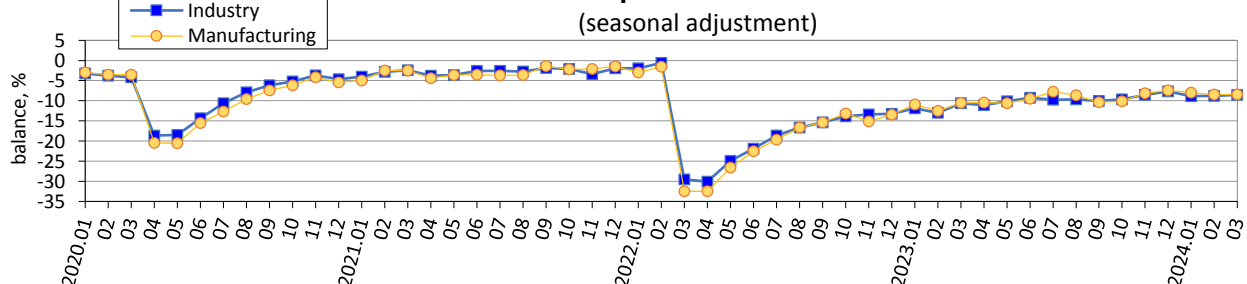
### Assessment of current export order-books (export demand) on the industrial production

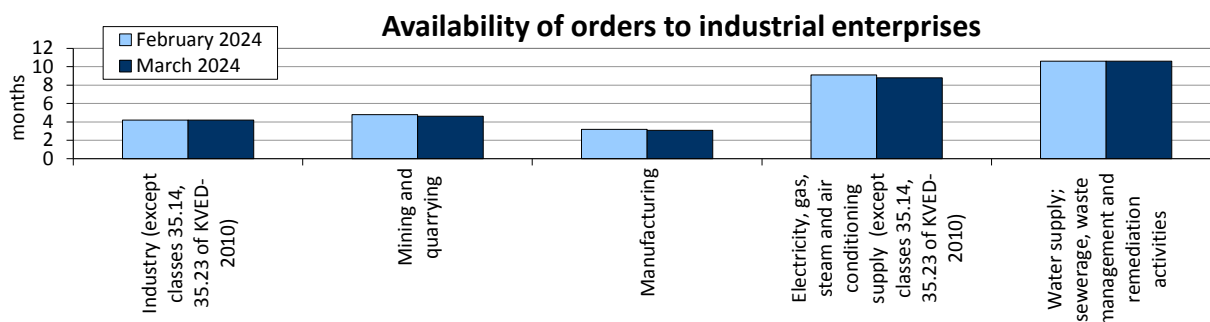


### Expected changes in selling prices for the products of industry over the next 3 months



### Expected changes in employment at industrial enterprises over the next 3 months





**Results of the survey of industry enterprises  
in March 2024**

(per cent of the total number of surveyed enterprises)

Industry (sections B-E except classes 35.14, 35.23 of KVED-2010)	Results of the survey of 1085 enterprises							
	How did change in December 2023 — February 2024:	increased	remain unchanged	decreased	no response	balance	change of balance over previous month, pp	
	production	21	49	30	0	-9	-1	
	total order-books (demand)	18	54	28	0	-10	1	
	How do you assess your current overall order-books (demand)	more than sufficient (above normal)	sufficient (normal for the season)	not sufficient (below normal)	no response	balance	change of balance over previous month, pp	
		1	58	41	0	-40	-2	
	How do you assess your current export order-books (export demand)	more than sufficient (above normal)	sufficient (normal for the season)	not sufficient (below normal)	no export	balance	change of balance over previous month, pp	
		0	25	31	44	-31	-2	
	How do you assess your current stocks of finished products	too large (above normal)	adequate (normal for the season)	too small (below normal)	no stocks of finished goods	balance	change of balance over previous month, pp	
		3	61	12	24	-9	0	
	The future development of your business situation is currently	easy to predict	modera- tely easy to predict	modera- tely difficult to predict	difficult to predict	no response	balance	change of balance over previous month, pp
		1	3	56	40	0	66	1
	How do you expect to change over March-May 2024:	increase	remain unchanged	decrease	no response	balance	change of balance over previous month, pp	
	production	28	53	19	0	9	4	
	selling prices for the products	30	67	3	0	27	-2	
employment	8	74	18	0	-10	0		
How do you expect to change export orders (export demand) over March-May 2024	increase	remain unchanged	decrease	no export	balance	change of balance over previous month, pp		
	9	40	8	43	1	0		

Mining and quarrying (section B of KVED-2010)	Results of the survey of 57 enterprises							
	How did change in December 2023 — February 2024:	increased	remain unchanged	decreased	no response	balance	change of balance over previous month, pp	
	production	12	55	33	0	-21	4	
	total order-books (demand)	9	68	23	0	-14	2	
	How do you assess your current overall order-books (demand)	more than sufficient (above normal)	sufficient (normal for the season)	not sufficient (below normal)	no response	balance	change of balance over previous month, pp	
		2	54	44	0	-42	-6	
	How do you assess your current export order-books (export demand)	more than sufficient (above normal)	sufficient (normal for the season)	not sufficient (below normal)	no export	balance	change of balance over previous month, pp	
		0	12	19	69	-19	2	
	How do you assess your current stocks of finished products	too large (above normal)	adequate (normal for the season)	too small (below normal)	no stocks of finished goods	balance	change of balance over previous month, pp	
		2	65	21	12	-19	-2	
	The future development of your business situation is currently	easy to predict	modera- tely easy to predict	modera- tely difficult to predict	difficult to predict	no response	balance	change of balance over previous month, pp
		0	0	58	42	0	71	2
	How do you expect to change over March-May 2024:	increase	remain unchanged	decrease	no response	balance	change of balance over previous month, pp	
production	28	65	7	0	21	6		
selling prices for the products	19	72	9	0	10	-9		
employment	2	75	23	0	-21	-2		
How do you expect to change export orders (export demand) over March-May 2024	increase	remain unchanged	decrease	no export	balance	change of balance over previous month, pp		
	7	23	3	67	4	0		

Manufacturing (section C of KVED-2010)	Results of the survey of 862 enterprises						
	How did change in December 2023 — February 2024:	increased	remain unchanged	decreased	no response	balance	change of balance over previous month, pp
	production	20	49	31	0	-11	1
	total order-books (demand)	17	53	30	0	-13	1

Continued

Manufacturing (section C of KVED-2010)	How do you assess your current overall order-books (demand)	more than sufficient (above normal)		sufficient (normal for the season)		not sufficient (below normal)		no response	balance	change of balance over previous month, pp
		1		57		42		0	-41	-1
	How do you assess your current export order-books (export demand)	more than sufficient (above normal)		sufficient (normal for the season)		not sufficient (below normal)		no export	balance	change of balance over previous month, pp
		0		31		37		32	-37	-2
	How do you assess your current stocks of finished products	too large (above normal)		adequate (normal for the season)		too small (below normal)		no stocks of finished goods	balance	change of balance over previous month, pp
		3		68		14		15	-11	-2
	The future development of your business situation is currently	easy to predict	modera- tely easy to predict	modera- tely difficult to predict	difficult to predict	no response	balance	change of balance over previous month, pp		
		1	4	56	39	0	64	0		
	How do you expect to change over March-May 2024:	increase	remain unchanged		decrease	no response	balance	change of balance over previous month, pp		
	production	31	54		15	0	16	5		
	selling prices for the products	34	63		3	0	31	-2		
	employment	9	75		16	0	-7	1		
	How do you expect to change export orders (export demand) over March-May 2024	increase	remain unchanged		decrease	no export	balance	change of balance over previous month, pp		
		11	48		10	31	1	0		

Electricity, gas, steam and air conditioning supply (section D, except classes 35.14, 35.23 of KVED-2010)	Results of the survey of 102 enterprises						
	How did change in December 2023 — February 2024:	increased	remain unchanged	decreased	no response	balance	change of balance over previous month, pp
	production	38	32	30	0	8	-28
	total order-books (demand)	28	44	28	0	0	-26
	How do you assess your current overall order-books (demand)	more than sufficient (above normal)	sufficient (normal for the season)	not sufficient (below normal)	no response	balance	change of balance over previous month, pp
		0	64	36	0	-36	-7
	How do you assess your current export order-books (export demand)	more than sufficient (above normal)	sufficient (normal for the season)	not sufficient (below normal)	no export	balance	change of balance over previous month, pp
		1	1	0	98	1	2

Continued

Electricity, gas, steam and air conditioning supply (section D, except classes 35.14, 35.23 of KVED-2010)	How do you assess your current stocks of finished products	too large (above normal)	adequate (normal for the season)	too small (below normal)	no stocks of finished goods	balance	change of balance over previous month, pp	
		0	12	3	85	-3	-1	
	The future development of your business situation is currently	easy to predict	moderately easy to predict	moderately difficult to predict	difficult to predict	no response	balance	change of balance over previous month, pp
		2	3	52	43	0	66	0
	How do you expect to change over March-May 2024:	increase	remain unchanged	decrease	no response	balance	change of balance over previous month, pp	
	production	8	28	64	0	-56	-10	
	selling prices for the products	5	90	5	0	0	-8	
	employment	2	64	34	0	-32	-5	
How do you expect to change export orders (export demand) over March-May 2024	increase	remain unchanged	decrease	no export	balance	change of balance over previous month, pp		
	2	1	0	97	2	1		

Water supply, sewerage, waste management and remediation activities (section E of KVED-2010)	Results of the survey of 64 enterprises						
	How did change in December 2023 — February 2024:	increased	remain unchanged	decreased	no response	balance	change of balance over previous month, pp
	production	14	72	13	1	1	9
	total order-books (demand)	12	77	11	0	1	6
	How do you assess your current overall order-books (demand)	more than sufficient (above normal)	sufficient (normal for the season)	not sufficient (below normal)	no response	balance	change of balance over previous month, pp
		2	68	30	0	-28	-1
	How do you assess your current export order-books (export demand)	more than sufficient (above normal)	sufficient (normal for the season)	not sufficient (below normal)	no export	balance	change of balance over previous month, pp
		0	0	2	98	-2	-1
	How do you assess your current stocks of finished products	too large (above normal)	adequate (normal for the season)	too small (below normal)	no stocks of finished goods	balance	change of balance over previous month, pp
0		31	2	67	-2	-1	
The future development of your business situation is currently	easy to predict	moderately easy to predict	moderately difficult to predict	difficult to predict	no response	balance	change of balance over previous month, pp
	2	1	50	47	0	70	0

Continued

<i>Water supply, sewerage, waste management and remediation activities (section E of KVED-2010)</i>	<b>How do you expect to change over March-May 2024:</b>	increase	remain unchanged	decrease	no response	balance	<i>change of balance over previous month, pp</i>
	production	23	69	8	0	15	15
	selling prices for the products	22	76	2	0	20	0
	employment	3	81	16	0	-13	-2
	<b>How do you expect to change export orders (export demand) over March-May 2024</b>	increase	remain unchanged	decrease	no export	balance	<i>change of balance over previous month, pp</i>
		0	2	0	98	0	0