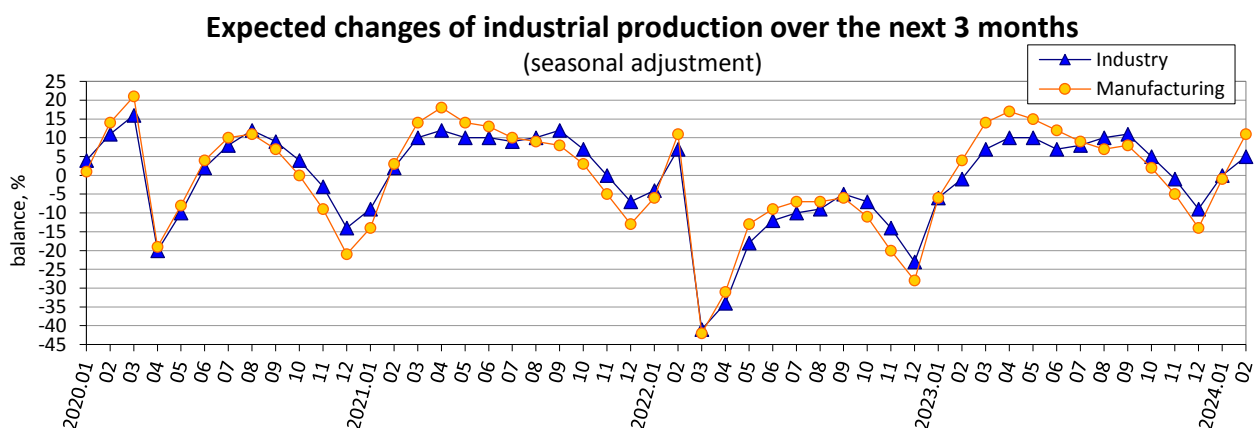
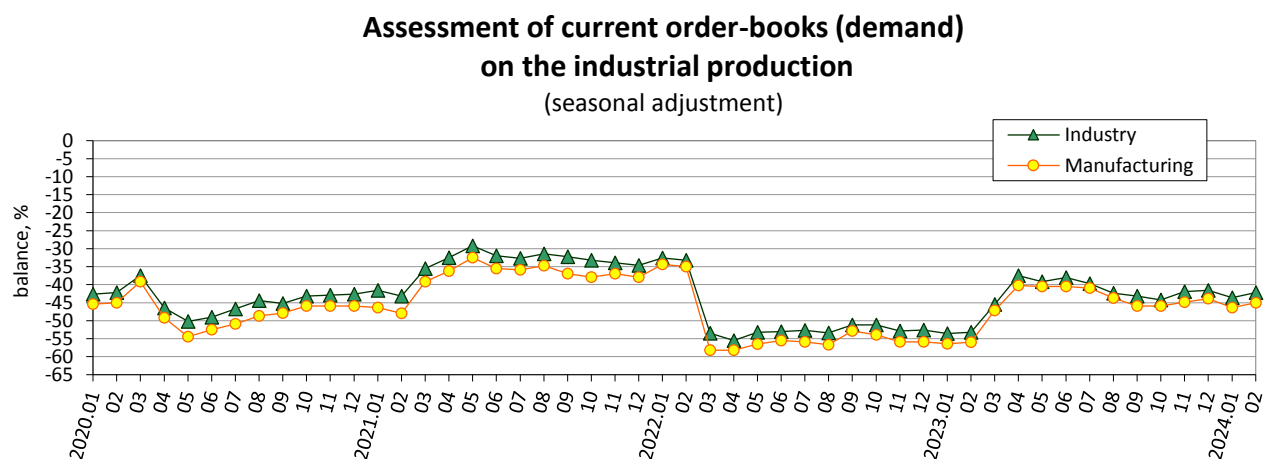
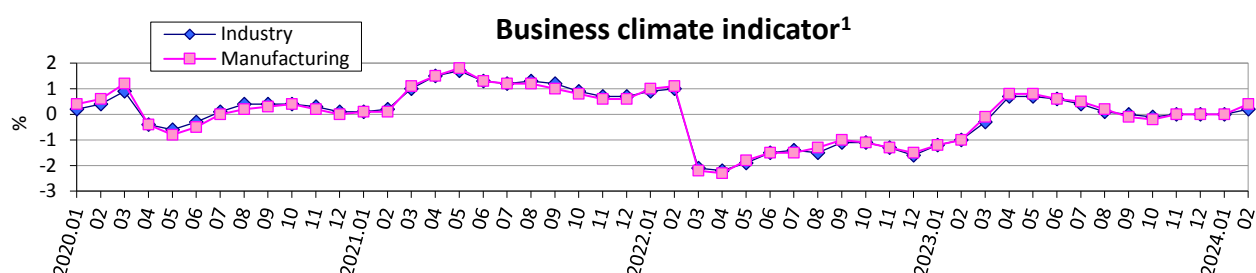
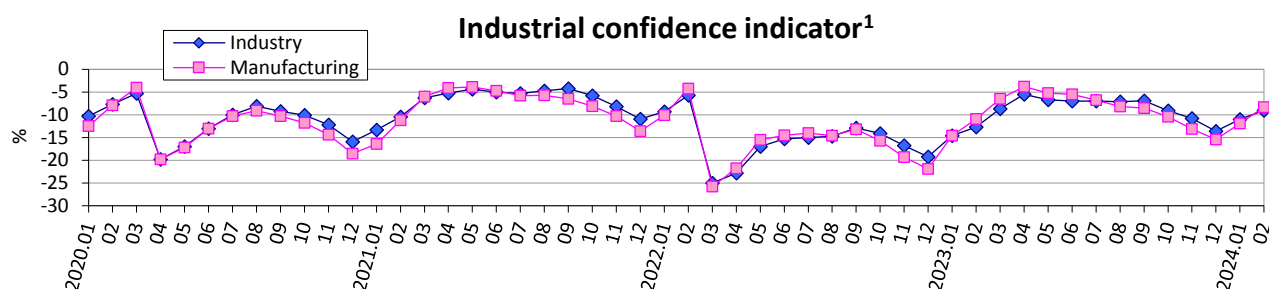


Expectations of industrial enterprises in February 2024 regarding the development of their business activity

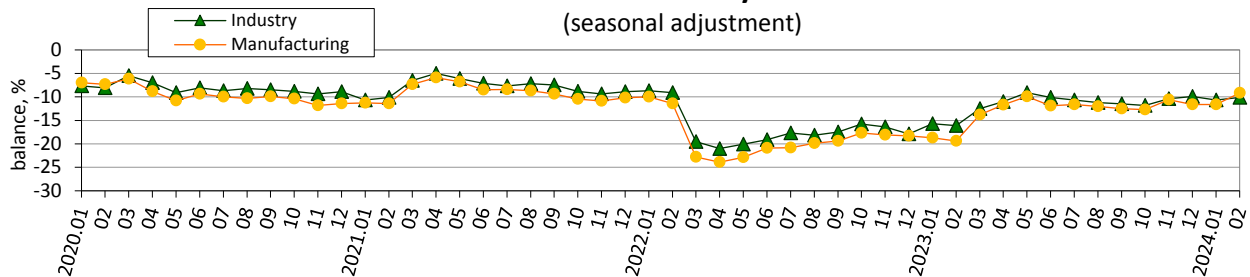


Notes. Data exclude the temporarily occupied territory of the Autonomous Republic of Crimea, the city of Sevastopol and a part of temporarily occupied territories in the Donetsk and Luhansk regions, data from March 2022 exclude the territories which are temporarily occupied by the Russian Federation and part of territories where the military actions are/were conducted.

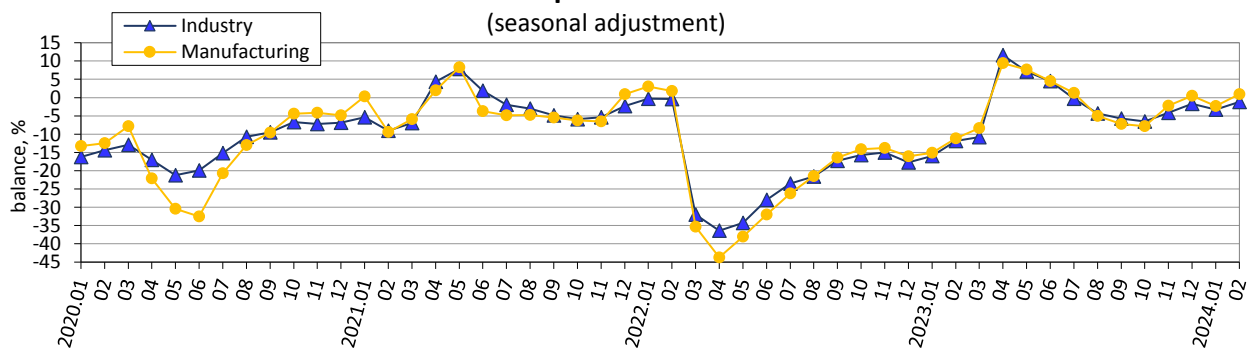
Information from March 2022 to February 2024 has been compiled on the basis of reports actually submitted by enterprises.

¹ The indicator is calculated by the method of calculation of indicators of business expectations, approved by order of the SSSU of 03 December, 2021 No 301 (with changes).

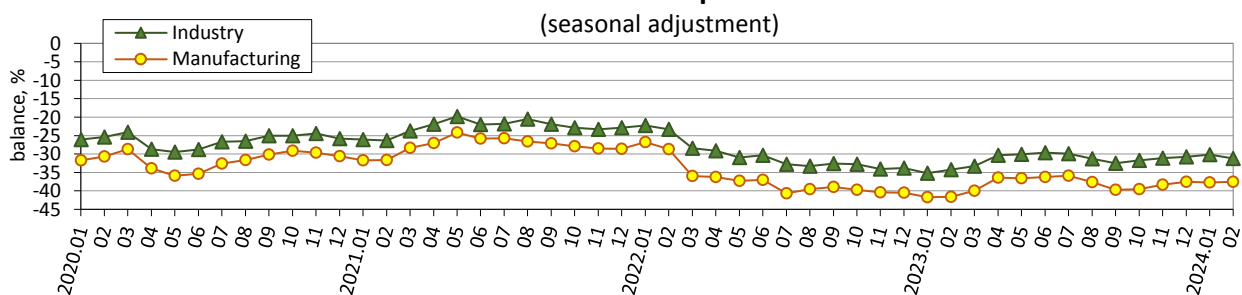
Assessment of current stock of finished products in industry



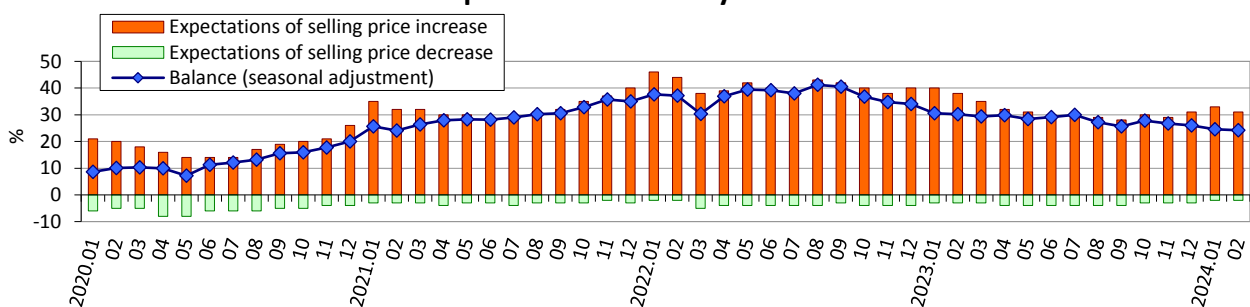
Assessment of industrial production in the past 3 months



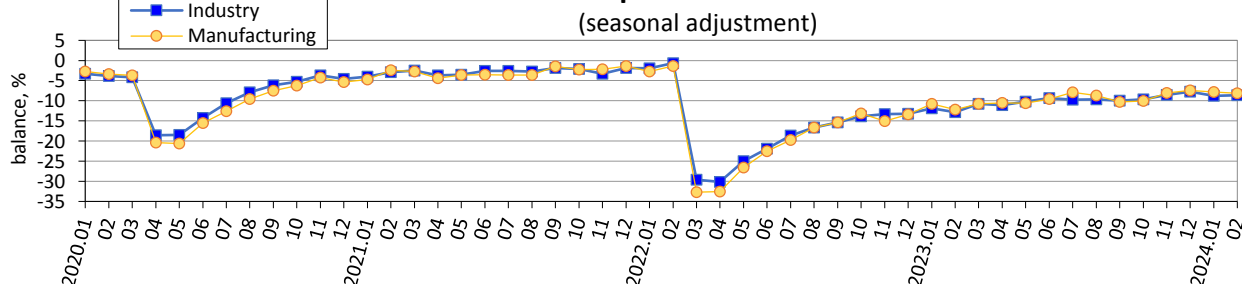
Assessment of current export order-books (export demand) on the industrial production

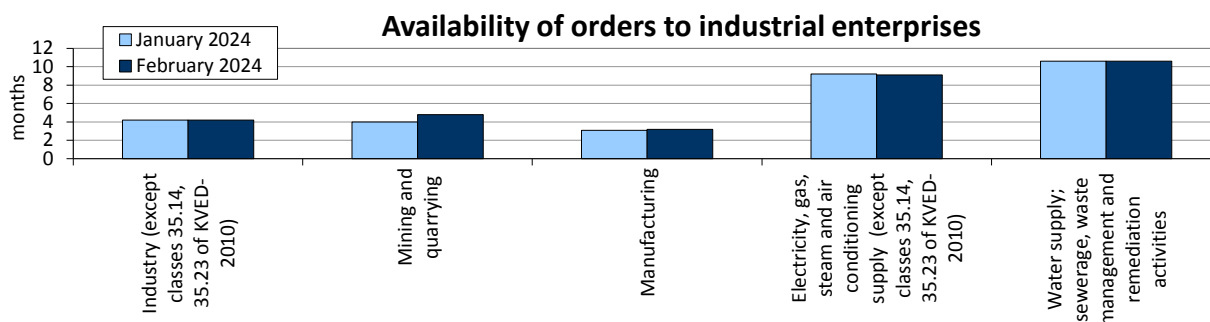


Expected changes in selling prices for the products of industry over the next 3 months



Expected changes in employment at industrial enterprises over the next 3 months





**Results of the survey of industry enterprises
in February 2024**

(per cent of the total number of surveyed enterprises)

Industry (sections B-E except classes 35.14, 35.23 of KVED-2010)	Results of the survey of 1079 enterprises							
	How did change in November 2023 — January 2024:	increased	remain unchanged	decreased	no response	balance	change of balance over previous month, pp	
	production	23	46	31	0	-8	-7	
	total order-books (demand)	19	51	30	0	-11	-6	
	How do you assess your current overall order-books (demand)	more than sufficient (above normal)	sufficient (normal for the season)	not sufficient (below normal)	no response	balance	change of balance over previous month, pp	
		1	60	39	0	-38	0	
	How do you assess your current export order-books (export demand)	more than sufficient (above normal)	sufficient (normal for the season)	not sufficient (below normal)	no export	balance	change of balance over previous month, pp	
		1	25	30	44	-29	-1	
	How do you assess your current stocks of finished products	too large (above normal)	adequate (normal for the season)	too small (below normal)	no stocks of finished goods	balance	change of balance over previous month, pp	
		3	60	12	25	-9	0	
	The future development of your business situation is currently	easy to predict	modera- tely easy to predict	modera- tely difficult to predict	difficult to predict	no response	balance	change of balance over previous month, pp
		1	3	56	40	0	65	0
	How do you expect to change over February-April 2024:	increase	remain unchanged	decrease	no response	balance	change of balance over previous month, pp	
	production	25	55	20	0	5	5	
	selling prices for the products	31	67	2	0	29	-2	
employment	7	76	17	0	-10	0		
How do you expect to change export orders (export demand) over February-April 2024	increase	remain unchanged	decrease	no export	balance	change of balance over previous month, pp		
	9	40	8	43	1	2		

Mining and quarrying (section B of KVED-2010)	Results of the survey of 53 enterprises							
	How did change in November 2023 — January 2024:	increased	remain unchanged	decreased	no response	balance	change of balance over previous month, pp	
	production	11	53	36	0	-25	-5	
	total order-books (demand)	10	64	26	0	-16	2	
	How do you assess your current overall order-books (demand)	more than sufficient (above normal)	sufficient (normal for the season)	not sufficient (below normal)	no response	balance	change of balance over previous month, pp	
		2	60	38	0	-36	8	
	How do you assess your current export order-books (export demand)	more than sufficient (above normal)	sufficient (normal for the season)	not sufficient (below normal)	no export	balance	change of balance over previous month, pp	
		0	13	21	66	-21	-3	
	How do you assess your current stocks of finished products	too large (above normal)	adequate (normal for the season)	too small (below normal)	no stocks of finished goods	balance	change of balance over previous month, pp	
		4	60	21	15	-17	5	
	The future development of your business situation is currently	easy to predict	modera- tely easy to predict	modera- tely difficult to predict	difficult to predict	no response	balance	change of balance over previous month, pp
		0	0	62	38	0	69	-4
	How do you expect to change over February-April 2024:	increase	remain unchanged	decrease	no response	balance	change of balance over previous month, pp	
	production	21	73	6	0	15	23	
	selling prices for the products	23	73	4	0	19	-3	
employment	2	77	21	0	-19	1		
How do you expect to change export orders (export demand) over February-April 2024	increase	remain unchanged	decrease	no export	balance	change of balance over previous month, pp		
	8	26	4	62	4	2		

Manufacturing (section C of KVED-2010)	Results of the survey of 860 enterprises						
	How did change in November 2023 — January 2024:	increased	remain unchanged	decreased	no response	balance	change of balance over previous month, pp
	production	21	46	33	0	-12	-8
	total order-books (demand)	18	50	32	0	-14	-5

Continued

Manufacturing (section C of KVED-2010)	How do you assess your current overall order-books (demand)	more than sufficient (above normal)		sufficient (normal for the season)		not sufficient (below normal)		no response	balance	change of balance over previous month, pp
		1		58		41		0	-40	0
	How do you assess your current export order-books (export demand)	more than sufficient (above normal)		sufficient (normal for the season)		not sufficient (below normal)		no export	balance	change of balance over previous month, pp
		1		31		36		32	-35	0
	How do you assess your current stocks of finished products	too large (above normal)		adequate (normal for the season)		too small (below normal)		no stocks of finished goods	balance	change of balance over previous month, pp
		4		67		13		16	-9	1
	The future development of your business situation is currently	easy to predict	modera- tely easy to predict	modera- tely difficult to predict	difficult to predict	no response	balance	change of balance over previous month, pp		
		1	4	56	39	0	64	-1		
	How do you expect to change over February-April 2024:	increase	remain unchanged		decrease	no response	balance	change of balance over previous month, pp		
	production	28	55		17	0	11	12		
	selling prices for the products	35	63		2	0	33	-2		
	employment	8	76		16	0	-8	1		
	How do you expect to change export orders (export demand) over February-April 2024	increase	remain unchanged		decrease	no export	balance	change of balance over previous month, pp		
		11	48		10	31	1	3		

<i>Electricity, gas, steam and air conditioning supply (section D, except classes 35.14, 35.23 of KVED-2010)</i>	<i>Results of the survey of 100 enterprises</i>						
	How did change in November 2023 — January 2024:	increased	remain unchanged	decreased	no response	balance	<i>change of balance over previous month, pp</i>
		53	30	17	0	36	-8
	total order-books (demand)	41	44	15	0	26	-9
	How do you assess your current overall order-books (demand)	more than sufficient (above normal)	sufficient (normal for the season)	not sufficient (below normal)	no response	balance	<i>change of balance over previous month, pp</i>
		1	69	30	0	-29	-2
	How do you assess your current export order-books (export demand)	more than sufficient (above normal)	sufficient (normal for the season)	not sufficient (below normal)	no export	balance	<i>change of balance over previous month, pp</i>
		0	1	1	98	-1	-1

Continued

Electricity, gas, steam and air conditioning supply (section D, except classes 35.14, 35.23 of KVED-2010)	How do you assess your current stocks of finished products	too large (above normal)	adequate (normal for the season)	too small (below normal)	no stocks of finished goods	balance	change of balance over previous month, pp	
		0	13	2	85	-2	1	
	The future development of your business situation is currently	easy to predict	moderately easy to predict	moderately difficult to predict	difficult to predict	no response	balance	change of balance over previous month, pp
		2	3	51	44	0	66	2
	How do you expect to change over February-April 2024:	increase	remain unchanged	decrease	no response	balance	change of balance over previous month, pp	
	production	10	34	56	0	-46	-59	
	selling prices for the products	11	86	3	0	8	-2	
	employment	3	67	30	0	-27	-17	
How do you expect to change export orders (export demand) over February-April 2024	increase	remain unchanged	decrease	no export	balance	change of balance over previous month, pp		
	1	1	0	98	1	1		

Water supply, sewerage, waste management and remediation activities (section E of KVED-2010)	Results of the survey of 66 enterprises						
	How did change in November 2023 — January 2024:	increased	remain unchanged	decreased	no response	balance	change of balance over previous month, pp
	production	12	68	20	0	-8	-6
	total order-books (demand)	11	73	16	0	-5	0
	How do you assess your current overall order-books (demand)	more than sufficient (above normal)	sufficient (normal for the season)	not sufficient (below normal)	no response	balance	change of balance over previous month, pp
		2	69	29	0	-27	-4
	How do you assess your current export order-books (export demand)	more than sufficient (above normal)	sufficient (normal for the season)	not sufficient (below normal)	no export	balance	change of balance over previous month, pp
		0	0	1	99	-1	-1
	How do you assess your current stocks of finished products	too large (above normal)	adequate (normal for the season)	too small (below normal)	no stocks of finished goods	balance	change of balance over previous month, pp
0		32	1	67	-1	1	
The future development of your business situation is currently	easy to predict	moderately easy to predict	moderately difficult to predict	difficult to predict	no response	balance	change of balance over previous month, pp
	1	2	50	47	0	70	3

Continued

<i>Water supply, sewerage, waste management and remediation activities (section E of KVED-2010)</i>	How do you expect to change over February-April 2024:	increase	remain unchanged	decrease	no response	balance	<i>change of balance over previous month, pp</i>
	production	12	76	12	0	0	-4
	selling prices for the products	20	80	0	0	20	1
	employment	2	85	13	0	-11	-3
	How do you expect to change export orders (export demand) over February-April 2024	increase	remain unchanged	decrease	no export	balance	<i>change of balance over previous month, pp</i>
		0	1	0	99	0	0